



No. BPUT/ Exam 121637/2017
Date: 24.06.2017

NOTICE

REGARDING e-EVALUATION CENTRE FOR EVEN SEMESTER (REGULAR /
BACK) EXAMINATION 2016-17

The University has opened e-Evaluation Centres at number of constituent and affiliated Colleges. However, it was decided to add some more e-Evaluation Centres to complete the evaluation in a time bound manner so that the various events of the non-negotiable academic calendar could be adhered to. The requirement / specifications of the e-evaluation centre is mentioned in Appendix - I & II. The Principal / Director (s) of the constituent and affiliated colleges, those who are interested to start a new evaluation centre at their colleges, are requested to go through this requirement as in Appendix-I. If they satisfy these requirements, then they may submit their consent to start the new e-evaluation centres at their colleges along with the facilities available and faculty strength to the undersigned on or before 01st July 2017 for necessary consideration at this end. The authority reserves right to or not to permit any College without citing any reason (s) or whatsoever thereto.

S. D. M.
24.6.17
Director Examinations

Encl: Appendix-I & II

Memo No: 21637/2017

Date: 24.06.2017

Copy to: To all Principal / Directors of constituent and affiliated colleges / PA to Hon'ble Vice Chancellor / PA to Registrar / Director, CD / FS / Dy. Director Examination / Examination Section / Information Officer and necessary action/ record.

S. D. M.
24.6.17
Director Examinations

Annexure-I (Specification for e-Evaluation Centre)

The following infrastructure and facilities are required at evaluation Center for online evaluation.

Computer Lab: Computers **connected** in LAN with dedicated Internet Connection

LAN Server Hardware: 4 GB RAM Server with 500 GB HDD. All the computers should be connected to the server in LAN.

Internet bandwidth: Internet Leased Line

Dedicated internet connection of minimum of 512 Kbps per computer

(e.g. 5 Mbps Internet Leased Line (ILL) for 10 computers; 10 Mbps for 20 computers, etc.)

Client Software

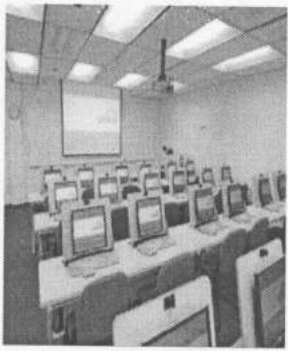
Genuine MS Windows software, Microsoft's .Net Framework 3.5 Service pack 1 or better

Server OS: Windows 2008 or above

DVD drive: In server system and one external drive

Ambience: Good lighting, Window curtains / blinds, Air conditioning

PC SPECIFICATION

Item	Specification	Computer Lab Minimum of 50 system
Processor type	I3 5 th Generation or higher 2.3 GHz or better.	
RAM	4GB or above.	
Free disk space	100 GB	
Operating system	Windows 7 / 8 with all service packs and updates installed	
Display resolution	1280x1024 pixels	
Internet Explorer	IE 8 or later	
Audio playback	Built-in Sound card and head phones	
PC User permissions	Local Administrator rights for installation.	

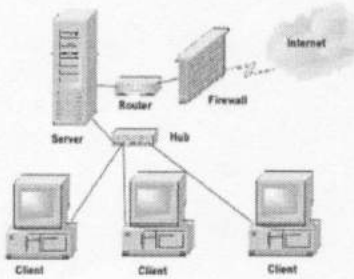
The PCs should have soundcards and headphones installed, which are required for training

Flash should be installed on the PCs to run the training application



Annexure-II (Specification for e-Evaluation Centre)

COMPUTER NETWORK



Firewall (configure it to allow full access to and from Marking server)

Antivirus

Physical Security :

Biometric authentication at entry
CC cameras

Power backup: UPS / Generator

John
24/6/17

Director Examinations